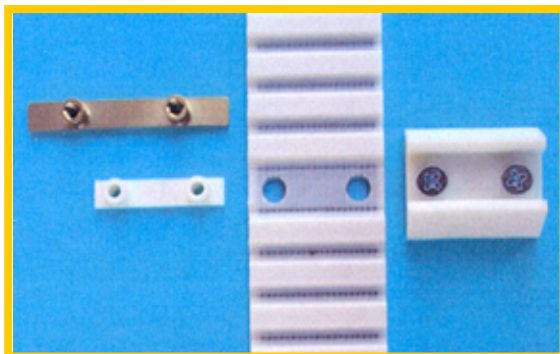


## Interchangeable cam- / cleat- system



### advantages

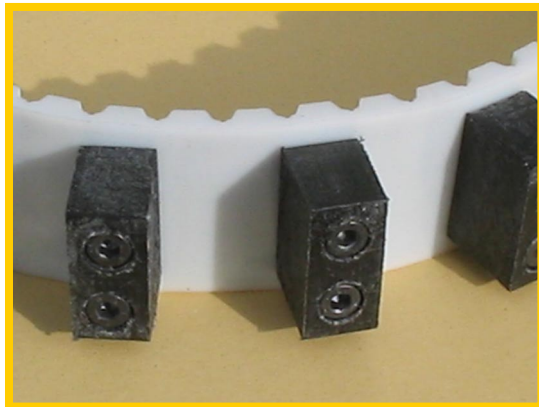
- quick installation and replacement of cams
- easy handling
- cams are interchangeable at any time (even when belt is installed)
- replacement causes low costs
- flexible distance of the cams depending on the pitch of the teeth
- different materials of cams possible
- individual producible, even for small quantities
- low installation and replacement costs
- using aligned profiles
- standard belts AT10 and AT20
- we offer two types

### application

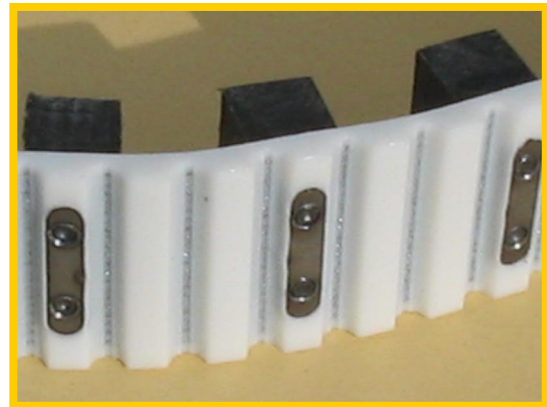
- when fast change of single cams is necessary
- when the belt can only be hardly removed out of the machine
- when cams can not be weld on the belt (e.g. metal cams)
- small quantities
- others

**Interchangeable- cams- system type N**

Parallel keys are inserted in the teeth of the timing belts. The cams are screwed on the parallel keys. This enables an easy and fast installation.



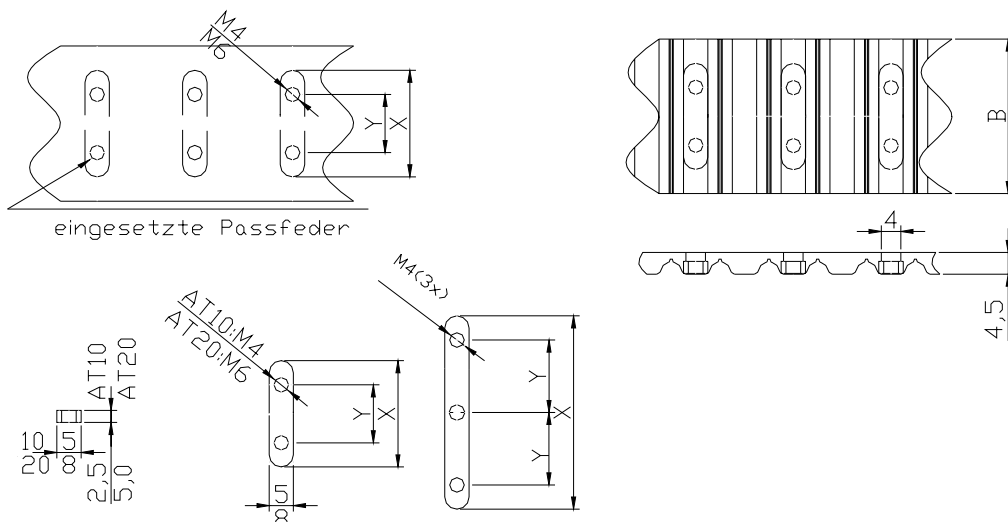
backside view



teeth side view

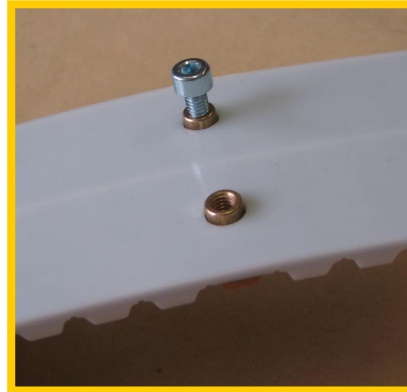
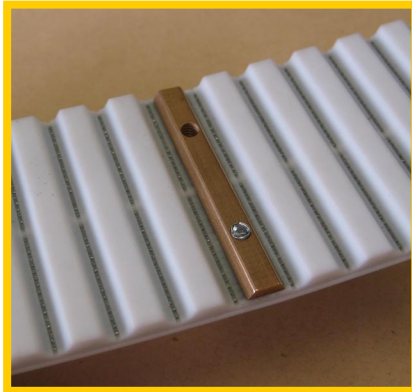
Timing belt	width [mm]	X [mm]	Y [mm]
AT10	12	10	5
	25	22	12
	32	22	12
	50	35	25
	75	60	2x25
AT20	50	45	25

other sizes on request



**Interchangeable- cleat- system type- M**

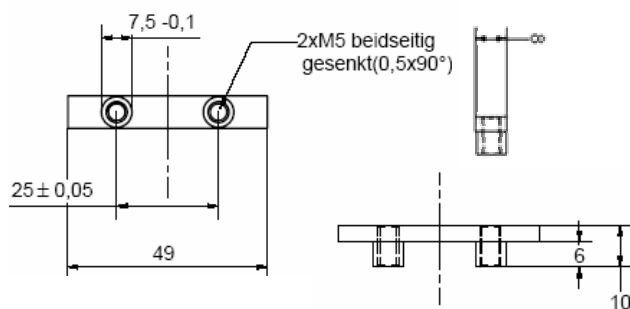
The belt will be punched, the teeth will be removed and replaced by an insert with screw thread.



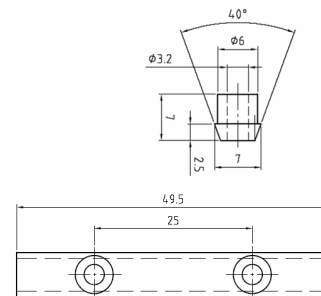
Depending on the width of the timing belt the insert has one (25mm), two (32mm, 50mm) or four (100mm) threads.

Timing belt	Width of the belt	Thread type	number of threads	Distance of threads
AT10	32	M4	2	20
	50		2	25
	75		3	
	100		4	
AT20	25	M5	1	-
	50		2	25
	75		3	
	100		4	

Available for AT10 and AT20 timing belts in brass or synthetic material. Insert for AT10 (width=32mm and width=50mm) also in PU and without thread available.



brass- insert AT10 width=50mm



PU- insert AT10 width=50mm